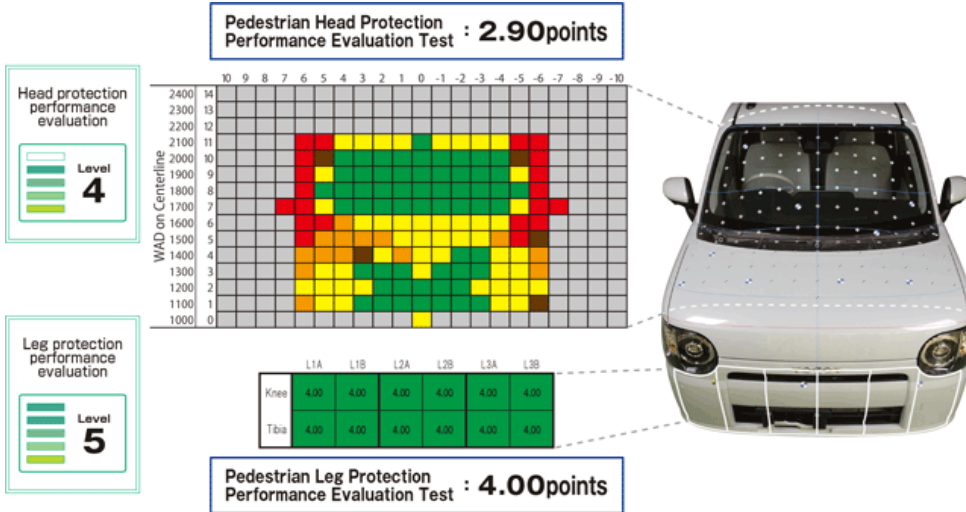


— Pedestrian Protection (Head Protection Performance Test / Leg Protection Performance Test)



— PSBR

Evaluation	Equipment Condition		Details														
	Front passenger's seat	Rear passenger's seat	Front passenger's seat								Rear passenger's seat						
			Auditory alarm			Visual alarm					Auditory alarm			Visual alarm			
			Sound	Range	Score	Display	Position	Range	Score	Sound	Range	Score	Display	Position	Range	Score	
Level4	O	O	O	A	40	O	A	B	10	-	-	-	O	G	A	25	

※1 [O] indicates that the vehicle has equipment with proper functions, [-] indicates that the vehicle does not have such equipment.
 ※2 In the "Range" column, "A" means driver's seat and the passenger's seat concerned, "B" means driver's seat only, and "C" means the passenger's seat concerned only.
 ※3 In the "Position" column, "A" means in front of the driver's seat, "B" means in front of the front passenger's seat, "C" means the center console area, "D" means in front of the rear seat on the window side, "E" means close to the center area of the rear seat, "F" means near the central ceiling area, "G" means room mirror part, and "H" refers to other areas.

— Installation Conditions Of Safety Devices

ABS	Provided
Air bag	Driver's seat:Provided/Front passenger seat:Provided
Side air bag	Provided
Side curtain Air bag	Provided
Stability Control System	Provided
Damage Mitigation Brake System	Provided
Seatbelt pretensioner	First row:Driver's seat:Provided/Front passenger seat:Provided Second row:Driver side:Provided/Front passenger side:Provided
Seat belt force (load) limiter	First row:Driver's seat:Provided/Front passenger seat:Provided Second row:Driver side:Provided/Front passenger side:Provided
Seatbelt Reminder	Front passenger seat:Provided Rear passenger seat:Provided