



National Agency for Automotive Safety and Victims' Aid

## Corporate Profile





# NASVA Is Your Safe and Secure Partner

Reliable, your kind partner

## Message from Top Management

Since its establishment in 2003, National Agency for Automotive Safety and Victims' Aid (NASVA) has been engaged in business as an agency specializing in "automobile accident measures" with the mission of "To contribute to realize a safe, secure, and comfortable automobile society through the support of accident victims and prevention of automobile accidents."

In Japan, automobiles are the basis of logistics and are indispensable to our daily lives. On the other hand, it is also true that there is a "negative aspect": the occurrence of automobile accidents. Under these circumstances, we believe that NASVA's mission is of great significance to society.

In pursuit of a society free of motor vehicle accidents, NASVA is engaged in accident victim support and prevention of automobile accidents. Everyone in the motorized society has a strong desire to prevent accidents from occurring, and I assume that especially those who have the misfortune to be victims and their families and bereaved relatives feel strongly about this. We will be close to them, listen to their voices, and support them. At the same time, we will prevent automobile accidents themselves so as not to spread the damage, and keep contributing to the realization of a society free from automobile accidents. We are strongly aware the mission above and will continue to work on our business.

In order to realize a society free from automobile accidents, it is best to take steps together with all the members of the automobile society, such as victim groups, commercial transportation companies, automobile manufacturers, automobile users, etc., and work sustainably. I think it is fundamentally essential.

We will continue to make sincere efforts to continue to be your reliable, close partner in society. I would like to ask for your continued understanding and support of our organization and mission.

National Agency for Automotive Safety and Victims' Aid (NASVA)  
President **Koichiro Nakamura**



**Name: National Agency for Automotive Safety and Victims' Aid (NASVA)**

**Established: October 2003**

**(National Center for Automotive Safety and Victims' Aid: 1973)**

**Organization: Headquarters (Tokyo), Transportation Safety Management Operations Department (Tokyo), Nationwide: 50 branch offices  
NASVA medical facilities: 4 NASVA medical centers, 8 NASVA medi-care sections**

**Excutive and staff: 369 persons**

**Expenses: 14.7 billion yen (FY2023 budget)**



### What is NASVA?

NASVA is the abbreviation for National Agency for Automotive Safety and Victims' Aid.

The background for the symbol mark shows the N from NASVA on a white line.

In addition, the appearance of light spreading from the A and V shows NASVA's wish for a bright future for all people that is full of light and hope.

**NASVA is an agency specializing in  
"automobile accident measures".**



NASVA brings unified implementation of three related activities, to “support” victims of automobile accidents, “prevent” automobile accidents, and “protect” from automobile accidents.

## NASVA's mascot character NASVA-chan



NASVA-chan participate in events all over the country and promote NASVA!

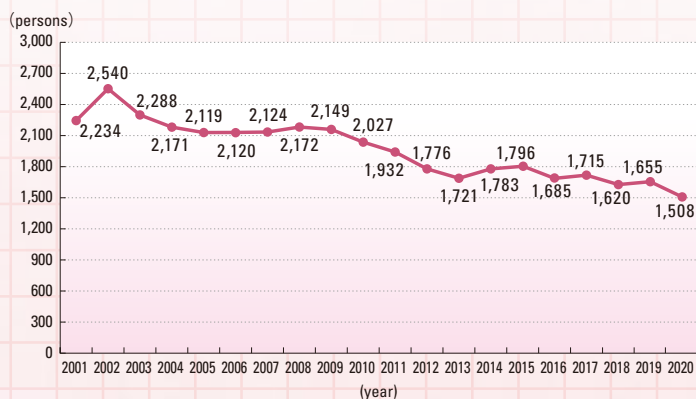


# Support for Home Nursing Care



Most of those who severely injured their brains and/or spines are cared at home after they leave hospitals. NASVA provides them economic and mental assistance to support their daily care.

## Number of persons with severe disabilities due to automobile accidents



## Benefit for Home Nursing Care

We give the benefits to those who suffer from severe aftereffects of automotive accidents on brains and/or spinal codes and are cared at home. The amount of the payment depends on the severity of the aftereffects and actual cost for the care at home, ranging from ¥36,500 to ¥211,530 per month. The benefits cover the costs of beds, wheelchairs, urine disposers, paper diapers and other disposal goods, and several kinds of service including day-care.

### Beneficiary

(From April 1, 2020)

Beneficiary		Monthly Benefit Amount (Japanese Yen)
Special Type I	Among Type 1, those whose damage on brains or spinal codes are especially sever.	85,310 ~ 211,530
Type I	Those who are injured on brains, spinal codes and/or internal organs, and need twenty-four hour care.	72,990 ~ 166,950
Type II	Those who are injured on brains, spinal codes and/or internal organs, and need occasional care.	36,500 ~ 83,480

> Always strive for face-to-face response.



## Mental Assistance

### ■ Consultation

NASVA has a consultant in nine main branch office. The consultants, who are qualified care workers or nurses, listen to problems and anxiety of family members of the beneficiaries, and give advice and information of care, mainly through telephone.

### ■ Visit to Beneficiary's Home

NASVA staff visits to beneficiary's home in order to keep in face-to-face contact with beneficiaries and their families, comprehend their needs and help them solve problems.



### ■ Beneficiary's Meetings

NASVA has held meetings of beneficiaries and their family members since 2009 on the request that they hope to talk and exchange information with other beneficiaries. All fifty branch office of NASVA host the meetings at least once a year in cooperation with hospitals and welfare institutions.



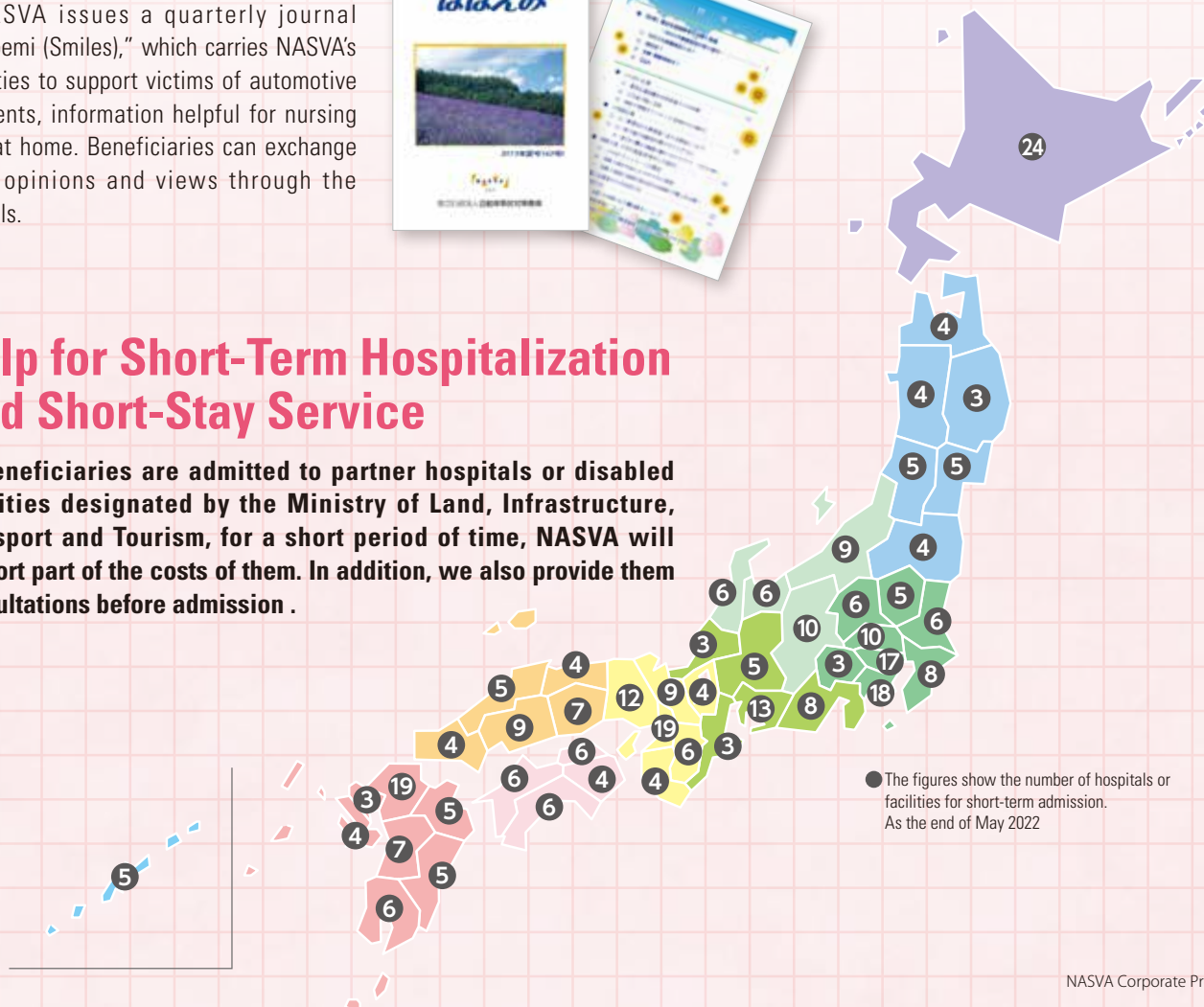
### ■ Quarterly Journal "Hohoemi"

NASVA issues a quarterly journal "Hohoemi (Smiles)," which carries NASVA's activities to support victims of automotive accidents, information helpful for nursing care at home. Beneficiaries can exchange their opinions and views through the journals.



## Help for Short-Term Hospitalization And Short-Stay Service

If beneficiaries are admitted to partner hospitals or disabled facilities designated by the Ministry of Land, Infrastructure, Transport and Tourism, for a short period of time, NASVA will support part of the costs of them. In addition, we also provide them consultations before admission .



# Support for Families Who Lost Breadwinners

## Loan without Interest for Children

Families whose breadwinner are killed or severely injured in automobile accidents often suffer from destitution. NASVA lend money without interest to children of such family on their request; ¥155,000 at the beginning of the loan, ¥20,000 or 10,000 (selective system) per month until the child graduates from junior-high school (usually at fifteen years old), and ¥44,000 when he/she enter school. The borrowers are expected to repay the loan for twenty years.



## Loan without Interest for the Needy

NASVA also provides loan without interest for those who are in poverty because of not receiving the damages. They are classified by three types:

- (1) Persons who have the legal right for damages but hardly recover a part/all of the damages.
- (2) Persons who have not received damages of aftereffects from insurance companies.
- (3) Persons whose damages will be paid by the Japanese government because they were injured in accidents caused by unknown drivers.

## “Tomo-no-Kai” Activities

NASVA has organized a group which consists of child-borrowers and their families in order to promote their welfare. The families can ask advice about problems in a daily life, gain encouragement, and share views and opinions through the group called “Tomo-no-Kai.” The main activities of Tomo-no-Kai are as follows:



> Provide all possible assistance for the future of the children.



### ■ Quarterly Newsletter “Tomo-no-Kai Dayori”

NASVA issues a quarterly newsletter to help the member families exchange information and introduce Tomo-no-Kai activities mentioned below.



### ■ Meetings of the Member Families

Fifty NASVA branch office hold meetings of the Tomo-no-Kai members usually once a year and organize a one-day or an overnight trip. The trips offer children an opportunity to cultivate friendship and urge their guardians to talk over their problems.



### ■ Contest of Paintings, Photos and Calligraphy

In order for member children to cultivate sensibility and imagination, NASVA hosts contests and awards excellent works prize including the Minister of Land, Infrastructure and Transport Prize and the NASVA President Prize.



### ■ Events in Cooperation with Private Companies

Some private companies invite member children to various events in cooperation with NASVA.



### ■ Guardian Meetings

NASVA hosts guardian meetings in all fifty branch offices, which helps mothers or fathers of child borrowers ask advice mutually and solve their problems in daily lives.



# NASVA Medical Facilities

Treatment uses the most advanced medical equipments   Rehabilitation suitable for patients



One-floor hospital ward system

## Treatment and Nursing Care Based on Advanced Equipments and Attention to Details

NASVA has established and operates four NASVA Medical Centers that specialize in severely disabled persons such as those with persistence of impaired consciousness. These Centers provide hospitalization for persons who have suffered brain injury due to automobile accidents that put them a continuing state of severe impaired consciousness, offering suitable treatment and constant nursing care aimed at the possibility of social rehabilitation. In addition NASVA has made contracts with eight hospitals (NASVA Medi-care Section) offering treatment and nursing care equivalent to the NASVA Treatment and Nursing Care Center in part of their hospital functions.

The hospitalization period at these medical facilities is set at three years or less, with approval for hospitalization based on an integrated determination of the necessity for treatment and nursing care, and the possibilities for recovery, etc.

In these rehabilitation facilities, we respond with adoption of effective treatment and rehabilitation policies suited to each individual, based on the use of advanced medical devices (CT, MRI, PET, etc.).

In addition, we have implemented a one-floor hospital ward system (or monitoring systems in some NASVA Medi-care

Sections) that ensures intensive nursing, in order to enable quick discernment of even the slightest recoveries in the consciousness of hospitalized patients, as well as introduced a primary nursing system where a single nurse has continuous charge of a given patient throughout the hospitalization period. Based on these systems, the treatment and nursing is performed with attention to detail, to provide many natural stimuli in the course of daily living.

Primary nursing care







## List of NASVA Medical Facilities

NASVA Medical Centers  
230 beds



NASVA  
Medi-care Sections  
85 beds

= Grand total  
315 beds

### NASVA Okayama Medical Center

- Open in: February 1994
- Management: Social Welfare Organization Saiseikai Imperial Gift Foundation Inc., Okayama Saiseikai
- Location: 2-8-35 Nishifurumatsu, Kita-ku, Okayama-shi, Okayama-ken
- Number of beds: 50
- Tel: 086-244-7041
- URL: <http://www.okaryougo.jp/>



### NASVA Tohoku Medical Center

- Open in: July 1989
- Management: General Incorporated Foundation Kounankai
- Location: 4-20-6 Nagamachi Minami, Taihaku-ku, Sendai-shi, Miyagi-ken
- Number of beds: 50
- Tel: 022-247-1171
- URL: <http://www.touhoku-ryougo.com/>



### Nakamura Memorial Hospital

- Open in: December 2007
- Location: 14-291 Minami Ichijo Nishi, Chuo-ku, Sapporo-shi
- Number of outsourced beds: 12
- Tel: 011-231-8555
- URL: <http://www.nmh.or.jp/>



### Ibaraki Rehabilitation Hospital

- Open in: March 2023
- Location: 360 Nakayama, Douch, Moriya-shi, Ibaraki-ken
- Number of outsourced beds: 5
- Tel: 0297-48-6157
- URL: <https://ymg-irh.jp/>



### Kanazawa Neurosurgical Hospital

- Open in: January 2019
- Location: 262-2 Gomachi, Nonoichi-shi, Ishikawa-ken
- Number or outsourced beds: 5
- Tel: 076-246-5600
- URL: <https://www.nouge.net/>



### NASVA Chiba Medical Center

- Open in: February 1984
- Management: Seikeikai Medical Corporation
- Location: 3-30-1 Isobe, Mihama-ku, Chiba-shi, Chiba-ken
- Number of beds: 80
- Tel: 043-277-0061
- URL: <https://www.chiba-ryougo.jp/>



### St. Mary's Hospital

- Open in: December 2007
- Location: 422 Tsubukuhonmachi, Kurume-shi, Fukuoka-ken
- Number of outsourced beds: 20
- Tel: 0942-35-3322
- URL: <https://www.st-mary-med.or.jp/top.php>



### Shonan-East General Hospital

- Open in: May 2016
- Location: 500 Nishikubo, Chigasaki-shi, Kanagawa-ken
- Number of outsourced beds: 12
- Tel: 0467-83-9091
- URL: <https://fg-sthp.jp/>



### Matsuyama Shimin Hospital

- Open in: February 2020
- Location: 2-6-5 Otemachi, Matsuyama-shi, Ehime-ken
- Number or outsourced beds: 5
- Tel: 089-913-0081
- URL: <https://www.matsuyama-shimin-hsp.or.jp/>



### Izumiotzu Municipal Hospital

- Open in: January 2013
- Location: 16-1 Gejo-cho, Izumiotzu-shi, Osaka-fu
- Number of outsourced beds: 16
- Tel: 0725-32-5622
- URL: <https://www.hosp-ozu-osaka.jp/>



### NASVA Chubu Medical Center

- Open in: July 2001
- Management: Kouseikai Medical Corporation
- Location: 630 Kobicho-shimokobi, Minokamo-shi, Gifu-ken
- Number of beds: 50
- Tel: 0574-24-2233
- URL: <http://ryougo.kizawa-memorial-hospital.jp/>



### Fujita Health University Hospital

- Open in: January 2018
- Location: 1-9-8 Dengakugakubo, Kutsukake-cho, Toyoake-shi, Aichi-ken
- Number or outsourced beds: 10
- Tel: 0562-93-2111
- URL: <https://hospital.fujita-hu.ac.jp/>



# Ensuring Transport Safety for Automobile Transport Businesses

Automobile transport businesses (buses, taxis, trucks) has the greatest mission to maintain and improve the safety of its operations, because once an accident occurs, the damage and social impact can be extremely large.

For this reason, “aptitude tests”, “training courses”, and “safety management efforts” have become partly mandatory for automobile transport businesses.

NASVA offers universal services at 50 branches all over

Japan, implementing “aptitude tests” targeting drivers, “training courses” targeting vehicle operation managers, and “safety management services” targeting the management level.

Through implementation of these accident prevention operations, NASVA provides a powerful support for safety efforts at transport businesses, and actively promotes accident reduction.

## Training courses for Vehicle Operation Managers, Etc.

Provides courses based on “actual operations or related laws, and management methods required for safety guarantees”, mainly for vehicle operation managers, who are in charge of safety in the transport business using bus, taxi, truck, or other vehicles, and strive to the ensure adoption of transport safety measures.

### Basic Course

Courses helping people who want a basic knowledge of laws and operations required for vehicle operation managers.

### General Course

A course targeting people who have already been assigned as a vehicle operation manager (\*1) or an assistant manager. The objective is to acquire updated knowledge of laws, and operations required for vehicle operations management.

### Special Course

Courses targeting vehicle operation managers whose offices have received administrative sanctions due to serious accidents or violation of laws or ordinances. (\*2) The objective is to prevent recurrence of automobile accidents or violations of laws.



Training courses (Lecture)



Training courses (Small Group Activity with small number of people)

\*1 The automobile transport businesses are required to appoint the vehicle operation manager and file an application with the Ministry of Land, Infrastructure, Transport and Tourism, and strives to ensure safety in daily transport.

\*2 Engages in more practical courses, such as small group activities based on the accident example, and strives to prevent a reoccurrence of the accident or violation.





# For Safe Driver Operation



Persons taking aptitude tests

## Aptitude tests

### Mandatory tests

- Novice Driver tests  
〈For a person newly hired as a driver〉
- Elderly driver test  
〈For drivers aged 65 or over〉
- Specific test I, Specific test II  
〈Persons who have caused traffic accidents resulting in death or serious injury take either Test I or II depending on the frequency of such accidents〉

### Optional tests

- General tests
- General tests with counseling
- Special tests

## Implementation of driver aptitude tests and counseling

Aptitude tests, mainly targeting drivers for transport businesses, are used to grasp a person's characteristics in both psychological and physical aspects, in regards to driver personality, safe driving attitudes, and cognition, processing functions, and audiovisual functions, etc., and provide detailed advice and counseling that can contribute to safe driving operation.

In addition, aptitude tests that are mandatory for specified driver classes (Novice drivers, elderly drivers, and drivers who have caused accidents) are implemented.



Counseling after test-taking



Aptitude test results

NASVA is the institution authorized by the Minister of Land, Infrastructure, Transport and Tourism to implement training courses for vehicle operation managers and aptitude tests.



For customers who wish to offer NASVA aptitude tests at their own business offices:

## We rent a dedicated set of equipment (separate fees)

©Aptitude tests can be taken at any time on the computer we rent.  
If you are taking the aptitude tests that require counseling, you would need to have a separate counseling session with the NASVA counselor.

- ▶ The regular testing fees apply.
- ▶ The rented equipment should not be used for any purposes other than taking the aptitude tests.



Note: The photo is for illustration only. The actual equipment may vary.

## Take Advantage of the Test Results for Enhancing Safe Driving Instructions

### Introduction of Our Seminars

Every member of our communities as well as everyone involved in the transportation business want safe driving, and avoid accidents. In order to achieve this goal, NASVA offers opportunities for vehicle operation managers to learn to fully utilize the Diagnostics when giving safe driving instructions to their drivers. We encourage you to take advantage of such opportunities by attending a Seminar on How to Capitalize on Diagnostics.



Theory	How to View the Diagnostics	30 min.
	How to Utilize the Diagnostics	30 min.
Practice	Role Playing	2 hours 30 min.

**Please note:** Seminar attendees need to bring the Diagnostics given to the drivers. Please make sure your drivers have taken the aptitude test before you attend the seminar.

(No need to have your drivers take the tests again if you already have their Diagnostics.)

# Cultivating a Safety Culture



## Safety Management Service

All automobile transport businesses have been required to perform “transport safety management”, with everyone from the actual drivers to management level required to keep transport safety in mind as most important, and to ceaselessly strive for improved transport safety.

However, many people may feel “what exactly should I do?” or “I have taken some action, but I am worried whether this is

enough”.

We respond to these questions and support transport businesses with “consulting and lecturer dispatch”, “safety management seminars” in relation to safety management as two main activities.

## We serve safety management consulting to cultivate a safety atmosphere within companies



## Seminars certified by the Ministry of Land, Infrastructure, Transport and Tourism

Seminars certified by the Ministry of Land, Infrastructure, Transport and Tourism ("Guidelines", "Risk Management (Basic)", "Internal Audit (Basic)") are held.

### Guidelines

For all 14 items of the guidelines\*, we will carefully explain the aim of initiatives to promote the construction and improvement of the overall safety management system and the approach method with specific examples for each item.

### Risk Management (Basic)

For the item "collecting and utilizing information on accidents and near-miss incidents" of the guidelines, we will provide explanations and case studies on the necessity of risk management for preventing accident recurrence and how to collect and utilize information on accidents, etc., with specific examples.

### Internal Audit (Basic)

For the item "internal audit" of the guidelines, we will explain and provide case studies on the knowledge required to carry out internal audits such as the role of internal auditors, audit methods and corrective actions, etc., with specific examples.

### Disaster Prevention Management

- Explanation of Guidelines for Transport Disaster Prevention.
- Workshop for Disaster Risk Assessment.

### Increased risk sensitivity

- Explanation of specific risks that exist in the field
- Workshop to improve the abilities required of middle management

\* Guidelines regarding the transport safety-management system

## Transport Safety Management Evaluation

The transport safety management evaluation implemented by NASVA is authorized by the Ministry of Land, Infrastructure, Transport and Tourism. To confirm whether the "safety management system" is established and improved by the automobile transport businesses themselves functions as a

system, we conduct interviews with top management and with people in the management divisions, as well as use documentation and records, etc., and then provide advice, etc., for further improvements in transport safety.

### Evaluation Flow

1 Application for enrollment



2 Agreement related to evaluation implementation



3 Evaluation scheduling and other prior adjustments and surveys



4 To send evaluation notification



5 Implementation of evaluation



6 Evaluation results reported (explanation of content)



Implementation of evaluations



Evaluation results



# Promotion of ISO 39001

~ New Road Traffic Safety Management System  
Based on an International Standard ~

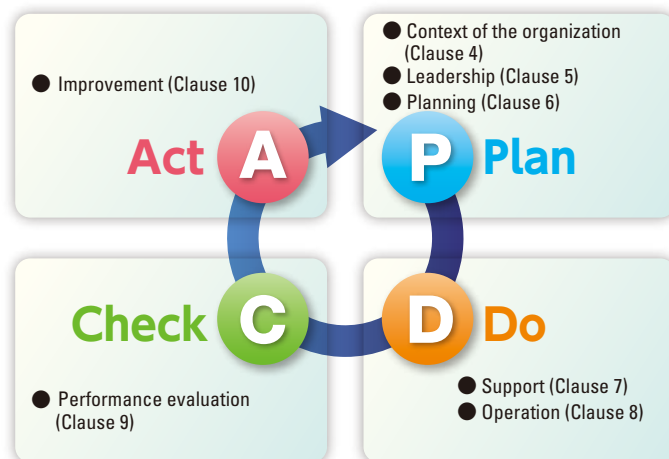


## What is ISO 39001?

ISO 39001 is international standard. Published October 2012, the objective is to reduce deaths and serious injuries due to road traffic accidents.

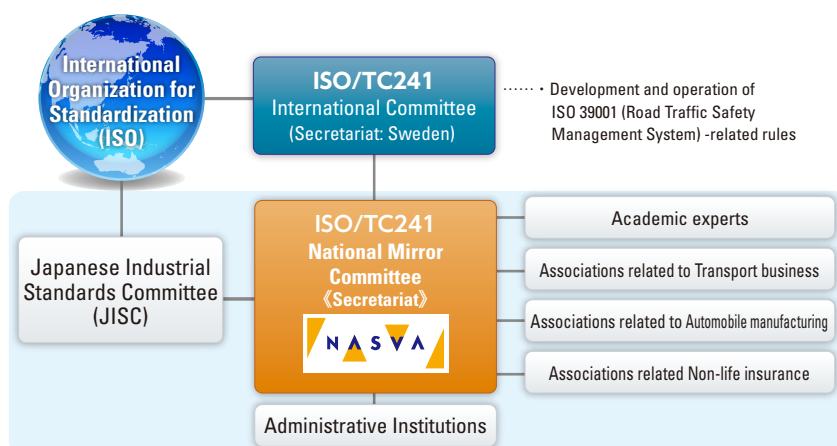
As with ISO 9001 (quality management system) or 14001 (environment management system), this standard stipulates requirements that are necessary for organizations to establish, implement, maintain, and improve a suitable road traffic safety management program in accordance with the PDCA cycle.

\* The chapter numbers. in the figure at right refers to the clause numbers. in ISO 39001:2012.



## NASVA and ISO 39001

NASVA has organized a National Mirror Committee formed from a wide range of experts involved in road traffic systems in Japan. This committee's role is to expand the implementation of ISO 39001 and to participate in the international committee ISO/TC241.



## ISO Consulting

ISO 39001 certification is issued by certification bodies.

In consulting, we focus on risk assessment deemed to be particularly important in the international standard. We provide advice on the operations including clarification of the road traffic safety-related risk encountered by business, determination of countermeasure, and priority of action items as well as on the methods of continuous improvement of the management system which support these operations.



# For the spread of safer cars and child seats

## Provision of safety information based on car assessments

Safety performance assessments of generally sold cars and child seats are performed as a car assessment project in order to spread safer cars and child seats.

The result of the safety performance assessment of your car and child seat can be known on the website.

**Japan New Car Assessment program**

**Search**



The car assessment is implemented so that a person who drives a car can easily choose a car and so that a car manufacturer can promote the development of safe cars.



## Five Star Award for Vehicle Safety Performance

We comprehensively evaluate collision safety performance and preventive safety performance, and provide information to automobile users as "Vehicle Safety Performance".

The Five Star Best Award will be awarded for the highest score among the highest rated (★★★★★) in the overall evaluation for the year in which the evaluation is conducted, and the Five Star Award will be awarded for the rest.



> Always keep in mind the safety of both car passengers and pedestrians.



## Summary of Evaluation Tests, and Evaluation of Safety Performance

In the Japan New Car Assessment Program (JNCAP), we implement various evaluation tests.

### Technologies to protect people in crashes. (Collision Safety Performance)

Technologies to protect driver, vehicle occupants, and pedestrians in event of an accident, evaluated by a combination of tests duplicating vehicle and barrier impacts and vehicle and human-body impacts.

#### Technology to protect the occupants of a car



Full frontal collision test



Offset frontal collision test



Side collision test



Performance test for electric shock protection

\* Limited to hybrid automobiles and other vehicles.



Performance test for neck injury protection in rear-end collision



Passenger seat belt reminder

Zoom

#### Technology to protect pedestrians



Pedestrian head protection performance test



Pedestrian leg protection performance test

### New technologies to avoid crashes (Preventive Safety Performance)

An extensive range of preventive safety technologies are evaluated to assist the driver, driver alerts and automatic braking to preclude a collision are examples.



AEBS to avoid collisions with a car



AEBS to avoid collisions with a pedestrian (at daytime)



AEBS to avoid collisions with a pedestrian (at night)



AEBS to avoid collisions with a bicycle



Lane departure prevention system



Pedal misapplication prevention device



High-performance headlight device

**Important:** Preventive safety technologies that assist the driver are not fail-safe technologies. Although it is unlikely that these technologies will fail under normal use, some conditions and surroundings of vehicle operation may have a counteracting effect on their performance. Carefully read all relevant instruction manuals, always drive safely, and as a further safeguard use good judgement in the deployment of such systems.



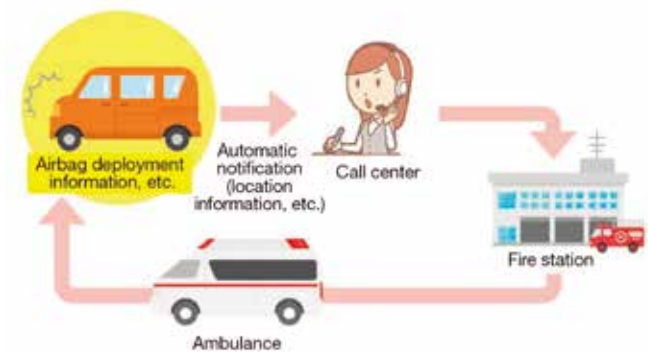


> Always keep in mind the safety of both car passengers and pedestrians.

## Technology to prepare for a serious accident (Automatic emergency notifications in serious accidents)

The program evaluates system that provide accident notifications on behalf of the driver or a witness in serious accidents, such as cases involving vehicle airbag deployment.

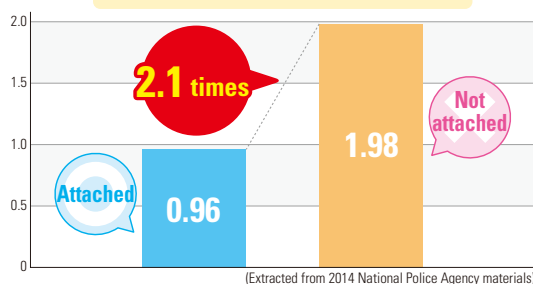
Flow of automatic emergency notifications in case of an accident



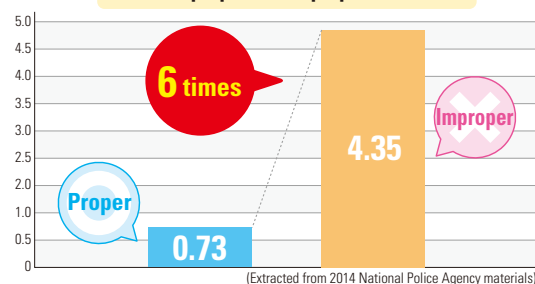
## Child Restraint Systems (CRS) Assessment

We publish reliable safety performance evaluations of CRS available on the market, to foster an environment that facilitates choice of safer products, and promote the development of safer products by manufacturers, to encourage the spread of Safer CRS.

Comparison of death and severe injury rates, for with and without CRS



Comparison of death and severe injury rates, for proper and improper use of CRS



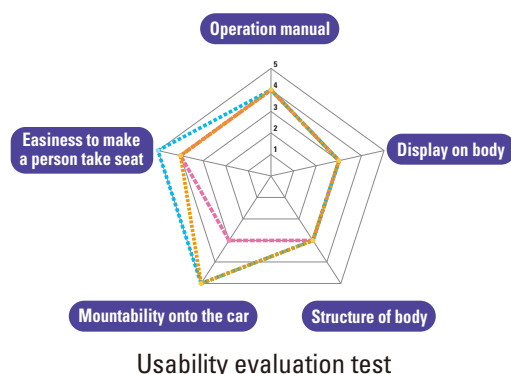
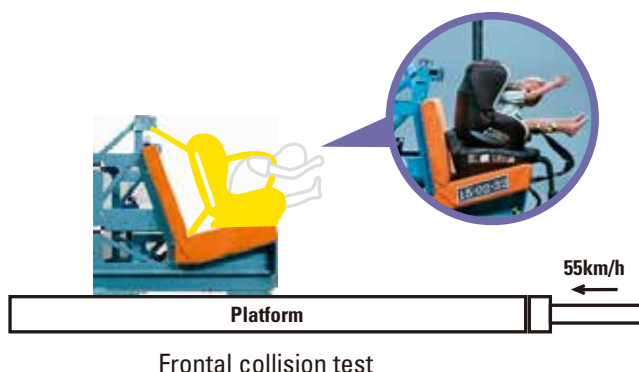
## ISO-FIX Gold Mark

This mark is displayed on ISO-FIX child safety seats that are easy to install and safe, and of which crash test results are all "Superior".



## Safety performance evaluation items for child restraint systems

A frontal collision test and usability evaluation test is performed.



# List of location

Please contact order to nearby NASVA

Name	Postal code	Location
Headquarters	130-0013	19F Arca East, 3-2-1 Kinshi, Sumida-ku, Tokyo
Transportation Safety Management Operations Department	130-0013	19F Arca East, 3-2-1 Kinshi, Sumida-ku, Tokyo
Sapporo Main Branch Office	060-0032	8F Kitaniijo Shinkawa Bldg., 12-98-42 Kita Nijo Higashi, Chuo-ku, Sapporo
Hakodate Branch Office	041-0806	3F HakodateTokyo Kaijo Nichido Bldg., 1-18-10 Mihara, Hakodate
Kushiro Branch Office	085-0018	2F Taiheiyo Kouhatsu Bldg., 7-4-1 Kuroganecho, Kushiro
Asahikawa Branch Office	079-8442	2F Asahikawa-chiku Truck Kenshu Center, 4-32-1 Ryutsudanchi Nijo, Asahikawa
Sendai Main Branch Office	984-0015	2F Miyagiken Truck Kaikan, 5-8-3 Oroshimachi, Wakabayashi-ku, Sendai
Fukushima Branch Office	960-8031	Fukushima Toyota Bldg., 7-33 Sakaemachi, Fukushima
Iwate Branch Office	020-0871	Nakanohashi 106 Bldg., 1-4-22 Nakanohashidori, Morioka
Aomori Branch Office	030-0843	Aomori ken Kotsu Kaikan, 139-21 Aza Toyoda, Oaza Hamada, Aomori
Yamagata Branch Office	990-0031	2F Harmony Yamagata Bldg., 2-4-19 Tokamachi, Yamagata
Akita Branch Office	010-0962	Akita ken Jidosha Kaikan, 2-12-53 Yabase Ohata, Akita
Niigata Main Branch Office	950-0965	2F Niigataken Truck Sogo Kaikan, 6-4 Shinkocho, Chuo-ku, Niigata
Nagano Branch Office	381-8556	2F Naganoken Truck Kaikan, 710-3 Minaminagaike, Nagano
Ishikawa Branch Office	920-8213	2F Ishikawaken Jidosha Kaikan, 1-2 Naoehigashi, Kanazawa
Toyama Branch Office	939-2708	1F Toyamaken Truck Kaikan, 1-5 Fuchumachi Shimahongo, Toyama
Tokyo Main Branch Office	130-0013	8F Arca Central Bldg., 1-2-1 Kinshi, Sumida-ku
Kanagawa Branch Office	222-0033	Kanagawaken Truck Sogo Kaikan, 2-11-1 Shinyokohama, Kohoku-ku, Yokohama
Chiba Branch Office	261-7125	25F World Business Garden Marive West, 2-6-1 Nakase, Mihama-ku, Chiba
Saitama Branch Office	330-0062	6F JS-1 Bldg., 3-12-6 Nakacho, Urawa-ku, Saitama
Ibaraki Branch Office	310-0026	Daini Chuo Bldg., 3-1-28 Izumicho, Mito
Gunma Branch Office	370-0006	Takasaki Truck Kaikan, 4-5-4 Tonyamachi, Takasaki
Tochigi Branch Office	320-0811	2F Meijiyasudaseimei Utsunomiya Odori Bldg., 2-1-5 Odori, Utsunomiya
Yamanashi Branch Office	406-0034	Yamanashi ken Jidosha Sogo Kaikan, 1000-7 Karakashiwa, Isawa-cho, Fuefuki
Nagoya Main Branch Office	460-0003	8F Nagoya AT Bldg., 1-18-22 Nishiki, Naka-ku, Nagoya
Shizuoka Branch Office	420-0837	1F TOKAI Hinodecho Bldg., 1-2 Hinodecho, Aoi-ku, Shizuoka
Gifu Branch Office	500-8842	Meiji Yasuda Seimei Gifu Kanamachi Bldg., 4-30 Kanamachi, Gifu
Mie Branch Office	510-0085	8F Yokkaichi Suwacho Bldg., 4-5 Suwacho, Yokkaichi
Fukui Branch Office	910-0005	6F Fukui Bldg., 3-2-1 Ote, Fukui
Osaka Main Branch Office	540-0028	10F Chuo Odori FN Bldg., 1-3-8 Tokiwamachi, Chuo-ku, Osaka
Kyoto Branch Office	612-8418	4F Kyoto Jidosha Kaikan, 51-5 Takeda Mukaishirocho, Fushimi-ku, Kyoto
Hyogo Branch Office	651-0083	11F Kobe Commerce, Industry and Trade Center Bldg., 5-1-14 Hamabedori, Chuo-ku, Kobe
Shiga Branch Office	524-0104	Shigaken Truck Sogo Kaikan, 2298-4 Konohamacho, Moriyama
Nara Branch Office	630-8122	6F JR Nara Denpou Bldg., 9-21 Sanjohonmachi, Nara
Wakayama Branch Office	640-8157	7F Nihon Seimei Wakayama Hachibancho Bldg., 11 Hachibancho, Wakayama
Hiroshima Main Branch Office	733-0036	1F Daiichi Ryoko Bldg., 2-4-25 Kanonshinmachi, Nishi-ku, Hiroshima
Tottori Branch Office	680-0006	Tottoriken Truck Kyokai Kenshu Center Bldg., 219-1 Maruyamacho, Tottori
Shimane Branch Office	690-0007	3F Matsue Ekimae Est Bldg., 553-6 Otesenbacho, Matsue
Okayama Branch Office	700-0941	Okayamaken Truck Sogo Kenshu Kaikan, 1-22-33 Aoe, Kita-ku, Okayama
Yamaguchi Branch Office	753-0814	Sanyo Bldg. Yoshiki, 1-3-1 Yoshikishimohigashi, Yamaguchi
Takamatsu Main Branch Office	760-0066	Kagawaken Truck Kyokai Anzen Kenshu Center Bldg., 3-3-6 Fukuokacho, Takamatsu
Tokushima Branch Office	770-0003	Tokushima ken Truck Kaikan, 2-14-50 Kitatamiya, Tokushima
Ehime Branch Office	791-1114	1F Emimeken Truck Sogo Service Center, 1081-1 Idomachi, Matsuyama
Kochi Branch Office	781-8016	Kochiken Truck Kaikan, 5-17 Minaminomarucho, Kochi
Fukuoka Main Branch Office	812-0016	4F Hakata Sun City Bldg., 2-1-5 Hakataeki Minami, Hakata-ku, Fukuoka
Saga Branch Office	840-0816	4F Saga Chuo Daiichi Seimei Bldg., 6-4 Ekiminamihonmachi, Saga
Nagasaki Branch Office	850-0033	11F TBM Nagasaki Bldg, 7-11 Manzaimachi, Nagasaki
Kumamoto Branch Office	860-0806	6F Asahi Shimbun Daiichi Seimei Bldg., 4-7 Hanabatacho, Chuo-ku, Kumamoto
Oita Branch Office	870-0905	3F Oitaken Truck Kaikan Bldg., 1-1-27 Mukaibarunishi, Oita
Miyazaki Branch Office	880-0913	2F Miyazakiken Truck Kyokai Sogo Kenshukaikan, 1-7-21 Tanehisa, Miyazaki
Kagoshima Branch Office	890-0062	5F KSC Kamoike, 2-4-35 Yojiro, Kagoshima
Okinawa Branch Office	900-0021	3F Okinawaken Hire and Taxi Kyokai, 2-103-4 Izumizaki, Naha
NASVA Chiba Medical Center	261-0012	3-30-1 Isobe, Mihama-ku, Chiba, Chiba
NASVA Tohoku Medical Center	982-0012	4-20-6 Nagamachi Minami, Taihaku-ku, Sendai, Miyagi
NASVA Okayama Medical Center	700-0927	2-8-35 Nishifurumatsu, Kita-ku, Okayama, Okayama
NASVA Chubu Medical Center	505-0034	630 Kobicho-shimokobi, Minokamo, Gifu



## National Agency for Automotive Safety and Victims' Aid

19F Arca East, 3-2-1 Kinshi, Sumida-ku, Tokyo 130-0013

【Direct line】	Administration Department	03 (5608) 7560, 7561
	Planning Department	03 (5608) 7584
	Finance Department	03 (5608) 7590～7595
	Automotive Safety Department	03 (5608) 7599, 7610
	Injured Party Welfare Department	03 (5608) 7630, 7633, 7638
	NCAP Management Department	03 (5608) 7587

Website <https://www.nasva.go.jp/>

● Search by Key-word **NASVA** 



2023.08

